

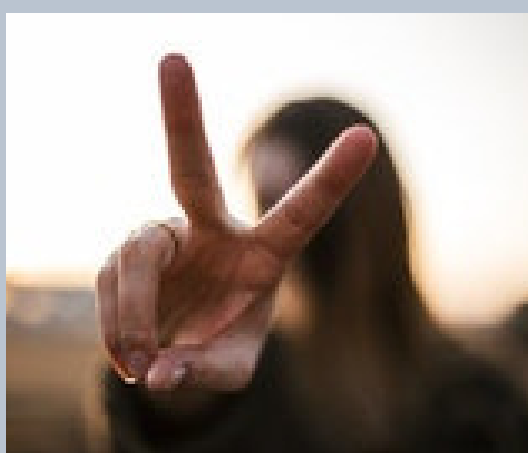
30 DAY SPANISH

Day 25 - More plans



A la una

At 1



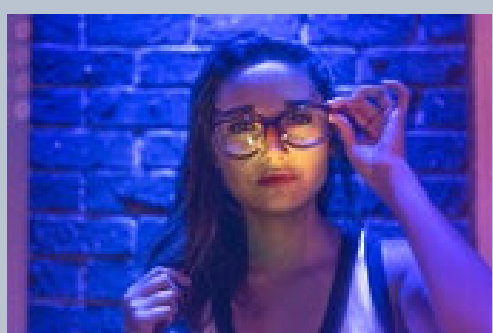
A las dos

At 2



No estoy segura/seguro

I'm not sure



Depende

It depends

Tarde

Late



DID YOU KNOW?

Remember if it is 1 we
use "la" if it is 2 or more
we use "las"

If you are male, you say
"seguro" and if female
"segura"

QUESTION SHEET

1. Underline the expression that you'd be most likely to use in the following situations

a) Your friend invites you to lunch and asks for a reply, but you do not have money to pay. What you say?

No estoy seguro/segura / Tarde

2. How do we say these in Spanish?

Late

It depends

At 1

3. Spot the errors

A la huna

De pende

A las doz

4. True / False

If you are male, you say "seguro" and if female "segura"

"A la una" means 2:00.

ANSWERS BELOW - DON'T PEEK!

REMEMBER TO REVISE A LITTLE BIT EACH DAY SO THAT SPANISH STAYS FRESH IN YOUR HEAD AND YOU GET USED TO THE SOUNDS OF THE LANGUAGE

ANSWER SHEET

1. Underline the expression that you'd be most likely to use in the following situations

a) Your friend invites you to lunch and asks for a reply, but you do not have money to pay. What you say?

No estoy seguro/segura / Tarde
No estoy seguro/segura

2. How do we say these in Spanish?

Late	Tarde
It depends	Depende
At 1	A la una

3. Spot the errors

A la huna	A la una
De pende	Depende
A las doz	A las dos

4. True / False

If you are male, you say "seguro" and if female "segura" **TRUE**

"A la una" means 2:00. **FALSE**

WELL DONE!

YOU HAVE JUST COMPLETED DAY 1 OF 30-DAY SPANISH. REMEMBER TO DO A LITTLE EACH DAY TO KEEP SPANISH FRESH IN YOUR MIND. SEE YOU TOMORROW!

FOR MORE RESOURCES AND ONLINE SPANISH CLASSES GO TO
WWW.MOYHUU.COM